



INSTALLATION GUIDE

SDL TRADOS STUDIO 2011

INNOVATION DELIVERED.

SDL | Trados
Studio 2011

COPYRIGHT

SDL Trados Studio 2011 SP2 Installation Guide

Copyright © 2009-2012 SDL plc.

All rights reserved. Unless explicitly stated otherwise, all intellectual property rights including those in copyright in the content of this website and documentation are owned by or controlled for these purposes by SDL PLC. Except as otherwise expressly permitted hereunder or in accordance with copyright legislation, the content of this site, and/or the documentation may not be copied, reproduced, republished, downloaded, posted, broadcast or transmitted in any way without the express written permission of SDL PLC.

This product may include open source or similar software designated: Hunspell distributed under GNU Lesser General Public License version 3; Sharpzplib and Spring.net distributed under GNU General Public License version 3; ICU distributed under IBM ICU License; Log4Net, Xalan and Xerces distributed under Apache License version 2.0; Wix distributed under Common Public License version 1.0; and SQLite which is public domain and requires no license for this distribution.

Trados, MultiTerm, SDLX, Passolo and TranslationZone are registered trademarks of SDL plc. Translator's Workbench, Trados Studio, TagEditor, QuickPlace, BeGlobal, GlobalConnect and AutoSuggest are trademarks of SDL plc. All other trademarks are the property of their respective owners. The names of other companies and products mentioned herein may be the trademarks of their respective owners. Unless stated to the contrary, no association with any other

company or product is intended or should be inferred.

Although SDL takes all reasonable measures to provide accurate and comprehensive information about the product, this documentation is provided as-is and all warranties, conditions or other terms concerning the documentation whether express or implied by statute, common law or otherwise (including those relating to satisfactory quality and fitness for purposes) are excluded to the extent permitted by law.

Information in this documentation, including any URL and other Internet Web site references, is subject to change without notice. Without limiting the rights under copyright, no part of this document may be reproduced, stored in or introduced into a retrieval system, or transmitted in any form or by any means (electronic, mechanical, photocopying, recording, or otherwise), or for any purpose, without the express written permission of SDL plc.

July 2012

TABLE OF CONTENTS

Chapter 1 Introducing SDL Trados Studio 2011 SP2

About this Guide	1-2
Audience for this Guide	1-2
Related Documentation	1-3
Introducing SDL Trados Studio 2011 SP2	1-4
About SDL Trados Studio 2011 SP2	1-4
About SDL Passolo Essential 2011 SP6	1-5
Trial License	1-5
Studio Editions	1-6
SDL Trados Studio Professional	1-6
SDL Trados Studio Freelance	1-6
SDL Trados Studio Starter and SDL Trados Studio Express	1-7
SDL Trados Studio Workgroup	1-8
Regulated Industries	1-9
Upgrade and Compatibility Information	1-10
Information For Upgraders	1-10
SDL Trados Studio Project and Package Compatibility	1-11
Translation Memory Compatibility	1-12
MultiTerm Compatibility	1-13

Chapter 2 Installing SDL Trados Studio 2011 SP2

Overview	2-2
System Requirements	2-2
Platforms	2-2
Internet Browser	2-2
Companion Software Required by SDL Trados Studio 2011 SP2	2-3
Upgrading from an Earlier Version of SDL Trados Studio	2-3
About the SDL Trados Studio 2011 SP2 Installer	2-4
SDL Passolo Essential 2011 SP6	2-5
SDL WinAlign	2-5
S-Tagger for FrameMaker	2-5
S-Tagger for QuickSilver	2-5

OpenExchange Apps	2-5
Prerequisite Software	2-6
Installation Location	2-6
Installing SDL Trados Studio 2011 SP2	2-7
Installation Media	2-8
Install SDL Trados Studio 2011 SP2	2-9
Before You Start	2-9
Other Installation Options	2-13
Administrative Installation	2-13
Logging an Installation	2-14
Silent Installation	2-14
Software Updates	2-20
Temporary Directory	2-20
Individual User Software Updates	2-20
Group Policy Software Updates	2-21
Logging a Software Update	2-25
Removing your Software Update	2-25
Maintaining your Installation	2-26
Repairing your SDL Trados Studio 2011 SP2 Installation	2-26
Repairing your SDL Passolo Essential 2011 SP6 Installation	2-26
Removing SDL Trados Studio 2011 SP2	2-27
Technical Support	2-28
What's Next?	2-29



INTRODUCING SDL TRADOS STUDIO 2011 SP2

This chapter gives you an overview the of SDL Trados Studio 2011 SP2 client installation procedure and the SDL Trados Studio 2011 SP2 system. Sections include:

- ❑ About this Guide
- ❑ Introducing SDL Trados Studio 2011 SP2
- ❑ Studio Editions
- ❑ Upgrade and Compatibility Information

Chapter

1

ABOUT THIS GUIDE

This guide describes how to install and license SDL Trados Studio 2011 SP2 client. This includes the installation of SDL Passolo Essential 2011 SP6.

This guide does not cover:

- ❑ Installing the server components of SDL Trados Studio 2011 SP2.
- ❑ Installing the SDL MultiTerm 2011 application.
- ❑ Converting or upgrading existing translation resources to use with SDL Trados Studio 2011 SP2.
- ❑ Using SDL Trados Studio 2011 SP2.

Audience for this Guide

This guide is for anyone who is installing any edition of SDL Trados Studio on a personal computer.

Related Documentation

- ❑ *SDL Studio GroupShare Installation Guide* - contains information about installing the server components of SDL Trados Studio 2011 SP2 and how to upgrade server-based translation memories from SDL Server 2009.
- ❑ *SDL Trados Studio 2011 SP2 Migration Guide* - contains information about converting or upgrading existing translation resources from SDL Trados 2007 and SDLX so that you can work with them in SDL Trados Studio 2011 SP2.
- ❑ *SDL Trados Studio 2011 SP2 Help* - contains information about using SDL Trados Studio 2011 SP2.
- ❑ *Translating and Reviewing Documents Quick Start Guide* - contains information for translators and reviewers. It focuses on how to translate and review files.
- ❑ *Project Management Quick Start Guide* - contains information for project managers. It focuses on the project lifecycle.
- ❑ *Translation Memory Management Quick Start Guide* - contains information for users who create and maintain translation memories.
- ❑ *SDL MultiTerm 2011 SP2 Client Installation Guide* - contains information about installing SDL MultiTerm 2011 SP2 client.
- ❑ *SDL Passolo Getting Started Guide* and the *SDL Passolo Handbook* - contain information about using SDL Passolo Essential 2011 SP6.

INTRODUCING SDL TRADOS STUDIO 2011 SP2

SDL Trados Studio 2011 SP2 is an integrated environment that enables translation teams to share translation tools, resources and project files. Resources such as translation memories can be shared over an intranet or over the Internet.

SDL Trados Studio 2011 SP2 can also be a single-user tool where the SDL Trados Studio 2011 SP2 software and translation memories are located on your computer and there is no interaction with translation memories or projects over an intranet or the Internet. Single users can open and work with project packages created in other SDL Trados Studio 2011 SP2 installations.

About SDL Trados Studio 2011 SP2

The SDL Trados Studio 2011 SP2 client contains tools that enable you to:

- ❑ Create and maintain local and server-based translation memories.
- ❑ Create and manage translation projects.
- ❑ Open documents and translate them.
- ❑ Open server-based and local translation memories and apply them to documents.
- ❑ Open local and server-based termbases and apply them to documents.
- ❑ Update translation memories and termbases during translation.

In a setup that includes server components, the SDL Trados Studio 2011 SP2 client communicates with server components through an intranet (through a LAN or WAN) or through the Internet using SDL Studio GroupShare. SDL Studio GroupShare includes the following components:

- ❑ Project Server 2011
- ❑ TM Server 2011
- ❑ MultiTerm Server 2011

About SDL Passolo Essential 2011 SP6

SDL Passolo Essential 2011 SP6 is a separate application, with a separate activation code, that is included in the SDL Trados Studio 2011 SP2 installer. SDL Passolo Essential 2011 SP6 is a localization tool for text resource translation and software localization. Text resources are the text components of a software that are displayed on the screen. This application can be launched directly from the **Home** view in SDL Trados Studio 2011 SP2 or from the **Start** menu.



NOTE

Depending on which version of SDL Trados Studio 2011 SP2 you purchased, the product license may not include SDL Passolo Essential 2011 SP6. However, the software is installed alongside all editions of SDL Trados Studio 2011 SP2 so that if you choose to upgrade your license to an edition that includes SDL Passolo Essential 2011 SP6, it will automatically start working.

Trial License

SDL Trados Studio 2011 SP2 includes a 30 day trial license. At the end of 30 days, if you want to continue using SDL Trados Studio, you have to purchase a license. You will not be able to work with SDL Passolo Essential 2011 SP6 until you have purchased a license as this requires a separate activation code.

STUDIO EDITIONS

The following editions of SDL Trados Studio 2011 SP2 are available:

- Professional
- Freelance
- Starter
- Express
- Workgroup
- Regulated Industries

SDL Trados Studio Professional

SDL Trados Studio Professional is the complete package that includes all available features. If you are also working with SDL Studio GroupShare, the server component of Studio, this edition gives you project manager functionality designed for use in GroupShare environments.

NOTE

If you are translating for a regulated industry, a separate license enables you to create regulator review bundles. These bundles contain a specific collection of documents needed by the regulator for review.

SDL Trados Studio Freelance

SDL Trados Studio Freelance is limited in the following ways:

- You can only work with five languages. To change your language selection at a later point, return the license, uninstall and reinstall, then activate your license again. This will take you back to the language selection window.
- You can use AutoSuggest dictionaries but you cannot create them.

NOTE

If you want to create AutoSuggest dictionaries, a separate AutoSuggest license enables you to do this.

- You cannot use SDL Trados Studio Freelance on a computer that is part of a domain-based corporate network.

- ❑ You can open and work with project packages, but you cannot create them.
- ❑ You cannot create custom task sequences.
- ❑ You cannot apply PerfectMatch to project files.
- ❑ You cannot publish server projects.

SDL Trados Studio Starter and SDL Trados Studio Express

SDL Trados Studio Starter and SDL Trados Studio Express both have similar functionality to Freelance. What you can do in Starter and Express depends on which workflow you are using. The following list shows the key tasks that you can perform in each workflow. Express also allows you to run Studio as part of a domain-based corporate network and have use of an unlimited number of languages.

What you can do in Starter and Express

Single-File Translation Workflow in Starter

You can perform the following actions when you are in a single-file translation workflow. A single-file translation workflow occurs when you open a single file for translation using the **Open Document** command.



NOTE

This workflow is not available in Express.

- ❑ Open a single file for translation.
- ❑ Create file-based translation memories.
- ❑ Add a single file-based translation memory to use during translation (The size of the translation memory is specified by your license).
- ❑ Add and remove termbases for translation.
- ❑ Edit translation units in a translation memory during translation.
- ❑ Edit translation memory settings.
- ❑ You can import and export translation memory data to or from a translation memory.
- ❑ Update the translation memory during translation.
- ❑ Generate a translated document.

Project Package Translation: Offline Workflow in Starter and Express

You can perform the following actions when you are in a project using packages in an offline workflow:

- ❑ Open project packages. (In Express, you can only open packages created in an SDL enterprise product. Enterprise products include WorldServer, TeamWorks and TMS.)
- ❑ Open files for translation or review from a project package.
- ❑ Disable or enable termbases in the package for translation.
- ❑ Disable or enable translation memories in the package for translation.
- ❑ Remove AutoSuggest dictionaries in the project for translation.
- ❑ Edit translation units in a translation memory during translation.
- ❑ Update the translation memory during translation.
- ❑ Return completed work in return packages.

Restrictions in Starter and Express

- ❑ The **Pre-translate**, **Populate Project TMs**, **Update Main TMs** and **Update Project TMs** batch tasks are disabled.
- ❑ The **Add Files**, **Add Folders**, **Add New Folder** and **Remove Files** commands in the **Files** view are disabled.
- ❑ You cannot specify custom settings when upgrading translation memories from previous editions of SDL Trados or SDLX.
- ❑ Translation memory maintenance in the **Translation Memories** view is disabled.

SDL Trados Studio Workgroup

If you are working with SDL Studio GroupShare, the server component of Studio, the SDL Trados Studio Workgroup edition gives you functionality designed for use in GroupShare environments.

- ❑ You can open server projects.
- ❑ You can translate or review documents from server projects.

Other standard Studio functionality is available with the following limitations:

- ❑ You cannot create new projects.

- ❑ You cannot publish projects to SDL Studio GroupShare.
- ❑ You cannot perform TM maintenance in **Translation Memories** view in Studio.

Regulated Industries

If you are translating for a regulated industry, you can purchase an additional license that enables you to create regulator review bundles. These bundles contain a specific collection of documents needed by the regulator for review. This license is an add-on for a Professional edition of Studio.

UPGRADE AND COMPATIBILITY INFORMATION

Information For Upgraders

If you currently have a previous version of SDL Trados or SDLX installed, you do not need to uninstall them before installing SDL Trados Studio 2011 SP2. The new version of the software will update an existing installation of SDL Trados Studio 2011/2011 SP1 or will be installed side-by-side with previous versions of the software.

If you want to install SDL Trados Studio 2009 and SDL Trados Studio 2011 SP2 on the same machine, make sure that you install the 2009 version first.

SDL Trados Studio Project and Package Compatibility

Projects

Projects in SDL Trados Studio 2011/2011 SP1 and SDL Trados Studio 2011 SP2 are the same format.

Projects that were created in SDL Trados Studio 2009 SP3 can be upgraded for use in SDL Trados Studio 2011 SP2. When you open a 2009 SP3 project in SDL Trados Studio 2011 SP2, you are asked if you want the project to be upgraded to the 2011 format. When you upgrade the project, the converted 2011 project is saved in the location of your choice and you can then choose if you want to archive the old 2009 project. If you do not archive the project, it is left in the 2009 project folder and can still be opened in SDL Trados Studio 2009 SP3.



NOTE

If you still need to work with users who are using SDL Trados Studio 2009 SP3 and have not upgraded to a version of SDL Trados Studio 2011, you can do this through the use of packages.

Packages

Packages in SDL Trados Studio 2011/2011 SP1 and SDL Trados Studio 2011 SP2 are the same format so you can easily work in a workflow between the two versions.

SDL Trados Studio 2011 SP2 supports a project package workflow between any version of SDL Trados Studio 2011 to SDL Trados Studio 2009 SP3 and back. To send packages to a 2009 user from 2011 SP2, you need to select the **Project > Create Studio 2009 Project Package** option. For more information, refer to the online help in SDL Trados Studio.

Translation Memory Compatibility

Software

SDL Trados Studio 2011 SP2 can only connect to SDL TM Server 2011 and SDL TM Server 2009 SP3. SDL Trados Studio 2011 SP2 cannot work with earlier versions of this server.

Server-based Translation Memories

Server-based translation memories that were created in SDL TM Server 2011 and SDL TM Server 2009 SP3 can be used directly in SDL Trados Studio 2011 SP2.

Server-based translation memories that were created in SDL TM Server 2009 1.0, SP1 or SP2 can be used in SDL Trados Studio 2011 SP2 but they must first be converted to current SDL TM Server version format. For information on how to upgrade these server-based translation memories, see the *SDL Studio GroupShare Installation Guide*.

Server-based translation memories that were created in SDLX Server, SDL TM Server 2007 or some earlier versions of this product, can also be used in SDL Trados Studio 2011 SP2 but they must first be converted to the current format. To do this, use the **Upgrade Translation Memories** wizard in SDL Trados Studio. For more information, see the *SDL Trados Studio 2011 SP2 Migration Guide*.

Local (File-based) Translation Memories

If you have local translation memories from any of the SDL Trados Studio 2009 versions, you can work with them in SDL Trados Studio 2011 SP2.

Local translation memories that were created in SDL Trados 2007, SDLX 2007 or earlier versions of these products can be used in SDL Trados Studio 2011 SP2 but they must first be converted to SDL Trados Studio 2011 SP2 format. To do this, use the **Upgrade Translation Memories** wizard in SDL Trados Studio. For more information, see the *SDL Trados Studio 2011 SP2 Migration Guide*.

MultiTerm Compatibility

Software

SDL Trados Studio 2011 SP2 is only compatible with SDL MultiTerm 2011 SP2 Client and SDL MultiTerm 2009 Client SP4.

If you install SDL Trados Studio 2011 SP2 and also have SDL MultiTerm 2011 installed, you must upgrade MultiTerm to the 2011 SP2 version to be able to use both applications in tandem.

SDL Trados Studio 2011 SP2 can only connect to SDL MultiTerm 2011 Server and SDL MultiTerm Server 2009 SP3. SDL Trados Studio 2011 SP2 cannot work with earlier versions of this server.



NOTE

Depending on which edition of SDL Trados Studio 2011 SP2 you purchased, SDL MultiTerm 2011 SP2 may be included in the purchase. However, it is not installed automatically. If you want to install SDL MultiTerm 2011 SP2, you must run the SDL MultiTerm 2011 SP2 installer. For more information, see the *SDL MultiTerm 2011 SP2 Client Installation Guide*.

Server-based Termbases

Server-based termbases that were created in SDL MultiTerm Server 2011 and SDL MultiTerm Server 2009 SP3 can be used directly in SDL Trados Studio 2011 SP2.

Server-based termbases that were created in SDL MultiTerm Server 2007 and 2009 SP1 or SP2 can be used in SDL Trados Studio 2011 SP2 but they must first be converted to SDL MultiTerm Server 2011 format. To do this, use the **SDL MultiTerm Server Upgrade Wizard** in the SDL MultiTerm Server Console. For more information, see the *SDL MultiTerm 2011 SP2 Online Help*.

Local (File-based) Termbases

If you have access to termbases from SDL MultiTerm 2011 SP2 or SDL MultiTerm 2009 SP3/SP4, you can work with them in SDL Trados Studio 2011 SP2. You can search termbases, insert term translations into documents, add new terms to termbases and edit or delete termbase entries.

Local termbases that were created in MultiTerm 2009 (1.0, SP1, SP2), SDL MultiTerm 2007 (7.5 and 7.x releases) or MultiTerm iX (version 6.x) can also be used in SDL Trados Studio 2011 SP2 but they must first be converted to SDL MultiTerm 2011 SP2 format.

When you select a termbase from a version previous to SDL MultiTerm 2011 or SDL MultiTerm 2009 SP3/SP4 in SDL Trados Studio, you are asked if you want the termbase to be converted to SDL MultiTerm 2011 SP2 format. You must say *Yes* if you want to use the termbase in SDL Trados Studio.

When a termbase is converted, the converted termbase file overwrites the original termbase in the same location.

**NOTE**

- ❑ Once a termbase has been converted to SDL MultiTerm 2011 SP2 format, it cannot be reverted to an earlier format.
- ❑ If you want to work with SDL MultiTerm 2009 (1.0, SP1, SP2), SDL MultiTerm 2007 or MultiTerm iX termbases in SDL Trados Studio 2011 SP2 and you also want to be able to open the termbases in the original MultiTerm application, you should create copies of the termbases before you open them in SDL Trados Studio 2011 SP2.



INSTALLING SDL TRADOS STUDIO 2011 SP2

This chapter contains all the information you need to install SDL Trados Studio 2011 SP2 client. It describes the hardware and software requirements for running SDL Trados Studio 2011 SP2 and provides a step by step guide to installing SDL Trados Studio 2011 SP2. Sections include:

- ❑ System Requirements
- ❑ About the SDL Trados Studio 2011 SP2 Installer
- ❑ Installing SDL Trados Studio 2011 SP2
- ❑ Software Updates
- ❑ Maintaining your Installation
- ❑ What's Next?

Chapter

2

OVERVIEW

This chapter describes the system requirements for installing and running SDL Trados Studio 2011 SP2 client and how to install SDL Trados Studio 2011 SP2 client.

SYSTEM REQUIREMENTS

To install and run SDL Trados Studio 2011 SP2 you will need:

- ❑ PC with a 1 gigahertz (GHz) or faster 32-bit (x86) or 64-bit (x64) processor and 1 GB RAM (32-bit) or 2 GB RAM (64-bit).
- ❑ Graphic card screen resolution of 1024 by 768, and 256 colors.
- ❑ 2 GB of available disk space is required to run SDL Trados Studio.
- ❑ The SDL Trados Studio installer requires 1.2 GB of disk space (1.7 GB if your PC runs Windows 7 or higher).

For optimum performance we recommend the following:

- ❑ Recent Pentium or compatible processor (using recent dual core or multi core technology) with 2 GB RAM or more.

Platforms

SDL Trados Studio 2011 SP2 runs on the latest service-packed versions of Windows XP, Windows Vista and Windows 7. Windows 2003 Server and Windows 2008 Server are also supported to facilitate scenarios where Citrix or Terminal Services are used.

Operating systems such as Windows 2000, Windows NT, Windows 98, Windows XP pre-SP3 and Windows 2003 pre-SP2 are not supported.

Internet Browser

Microsoft Internet Explorer 6 is the minimum requirement for SDL Trados Studio. You need this for displaying the online help.

If you access the help directly in a browser instead of clicking the **Help** button inside the Studio application, you can also use Mozilla Firefox 2 or higher.

Companion Software Required by SDL Trados Studio 2011 SP2

This is the non-SDL software that you may want to have installed on your machine to enable SDL Trados Studio 2011 SP2 to function fully.

Microsoft Office 2007 and 2010

SDL Trados Studio 2011 SP2 fully supports all Microsoft Office 2007 and 2010 file formats. An installation of Microsoft Office 2007 or 2010 is required to use:

- ❑ The preview features.
- ❑ Microsoft Word spell-checking.

Microsoft Word 2003 or later.

This is needed for processing RTF-based files and PDF files.

Microsoft Excel 2000-2003

The Microsoft Excel 2000-2003 file filter converts Microsoft Excel 2000-2003 files to Microsoft Excel 2007 documents on the fly and reconverts them back to Microsoft Excel 2000-2003 after translation. This speeds up the conversion for Microsoft Excel 2000-2003 documents significantly. For this file type to work correctly:


- ❑ On machines with Microsoft Excel 2000-2003 installed, install the Microsoft Office 2007 compatibility pack available from <http://www.microsoft.com/downloads>. This will ensure that SDL Trados Studio 2011 SP2 can do the on-the-fly conversion. If the compatibility pack is not installed, the previous, slower Microsoft Excel 2000-2003 filter will be used.
- ❑ On machines with Microsoft Excel 2007 installed, you do not need to do anything. The conversion will happen in the background.

Upgrading from an Earlier Version of SDL Trados Studio

You do not have to uninstall an earlier SDL Trados version before installing SDL Trados Studio 2011 SP2.

ABOUT THE SDL TRADOS STUDIO 2011 SP2 INSTALLER

The installer for SDL Trados Studio 2011 SP2 contains the following items:

SDL Trados Studio 2011 SP2	<p>This is the SDL Trados Studio 2011 SP2 product.</p>
SDL BeGlobal Community Account Sign-up	<p>During the installation process you can choose to create your own personalized SDL BeGlobal Community account to access free automated translation services from SDL BeGlobal. You can also sign up from within the Studio application at any time.</p>
SDL MultiTerm 2011 settings including SDL MultiTerm 2011 Core.	<p>These enable you to work with SDL MultiTerm termbases without having SDL MultiTerm installed.</p> <p> NOTE</p> <p>The SDL MultiTerm 2011 SP2 application is not included in the SDL Trados Studio 2011 SP2 installer. For more information, see the <i>SDL MultiTerm 2011 SP2 Client Installation Guide</i>.</p>
SDL Passolo Essential 2011 SP6	<p>This is a separate application that can be launched from the SDL Start menu.</p>
SDL Trados 2007 Compatibility Module containing: <ul style="list-style-type: none"> - SDL WinAlign - S-Tagger for FrameMaker - S-Tagger for Quicksilver 	<p>These are installed with Studio and can be launched from the Home view.</p>
OpenExchange Apps	<p>There are 4 OpenExchange Apps included in the installation. These are add-ons to enhance the existing functionality.</p>
Prerequisite software	<p>For SDL Trados Studio to work, there are a number of other pieces of software that need to be present on your computer. Most of these are also used by other applications and you probably have them already. However, if they are not present, they will be installed automatically.</p> <p>A complete list of the prerequisite software is given below.</p>

SDL Passolo Essential 2011 SP6

For more information on SDL Passolo Essential 2011 SP6 and its restrictions compared to the Professional and Team Editions, refer to the documentation available through the Windows **Start** menu under **Programs > SDL > SDL Passolo Essential 2011 SP6 > Online Help**.

SDL WinAlign

SDL WinAlign helps you to re-use valuable translation material from previous projects by allowing you to create a translation memory from your existing translations. The translation memory can be upgraded for use in SDL Trados Studio.

S-Tagger for FrameMaker

This is a conversion tool, used to prepare FrameMaker MIF files for translation with Translator's Workbench, TagEditor and Word.

S-Tagger for QuickSilver

This a conversion tool used to prepare Interleaf IASCII files for translation with Translator's Workbench, TagEditor and Word. Interleaf is part of the QuickSilver XML application suite.

OpenExchange Apps

- ❑ SDL Batch Find and Replace. See [KB article 3585](#).
- ❑ SDL TTX IT! See [blog article](#).
- ❑ SDL T-Window for Clipboard. See [KB article 3688](#).
- ❑ SDL XLIFF Converter for Microsoft Office. See [KB article 3448](#).

Prerequisite Software

The SDL Trados Studio 2011 SP2 installer will install the following software, if it is not already present on your computer:

- Microsoft .NET Framework 3.5 SP1
- Microsoft .NET Framework 4
- Windows Imaging Component (32-bit) if you have a Windows 2003 server.
- Windows Imaging Component (64-bit) if you have a Windows 2003 server.
- Windows installer 3.1v2
- Microsoft Visual C++ 2005 Redistributable SP1
- Microsoft Visual C++ 2008 Redistributable SP1
- Microsoft Visual C++ 2010 Redistributable
- Java 2 Runtime Environment 6 Update 24
- Microsoft Office 2003 Primary Interop Assemblies (only required if Microsoft Office 2003 is installed on the computer where SDL Trados Studio is being installed)
- Microsoft Office 2007 Primary Interop Assemblies (only required if Microsoft Office 2007 is installed on the computer where SDL Trados Studio is being installed)
- Microsoft Web Services Enhancements 2.0 SP3
- Open XML SDK 2.0 for Microsoft Office

Installation Location

The default installation location for SDL Trados Studio 2011 SP2 components is:

```
%ProgramFiles%\SDL\SDL Trados Studio\Studio2
```

The default installation location for SDL Passolo Essential 2011 SP6 components is:

```
%ProgramFiles%\SDL Passolo 2011
```

The Program Files folder on your computer may have a different name if you are using a non-English operating system.

INSTALLING SDL TRADOS STUDIO 2011 SP2

Installing SDL Trados Studio 2011 SP2 involves the following steps:

- Step 1**
- Install SDL Trados Studio 2011 SP2.
- The installer contains a number of compressed files and the first thing that happens is that the files are decompressed. When the installer files have all been decompressed, you can choose to create your own personalized SDL BeGlobal Community account to access free automated translation services from SDL BeGlobal. You can also sign up from within the Studio application at any time.
- Next the installation takes place. First SDL Passolo Essential 2011 SP6 and the prerequisites are installed and then SDL Trados Studio 2011 SP2.
- Once installed, you can start SDL Trados Studio 2011 SP2. The **Product Activation** dialog box is displayed. Here you can activate your product or choose to use the 30 day trial. The trial license runs SDL Trados Studio in Professional mode for 30 days. At the end of 30 days you must activate your own license. If you do not have a valid license at that time, the software will cease to function.
- Step 2**
- If you have purchased a Freelance, Starter or Express license, you may want to take advantage of the trial license as it will give you access to more functionality than your own license. For more information, see *Studio Editions* on page 1-6.

Installation Media

When you purchase SDL software, you can download the software from the Internet.

- ❑ If you downloaded the software, go to the location where you stored the downloaded files and run the installer from there.
- ❑ If you are installing the software from a network resource, ask your system administrator for the network location of the SDL Trados Studio 2011 SP2 installer setup program.

INSTALL SDL TRADOS STUDIO 2011 SP2

The installation routine for SDL Trados Studio 2011 SP2 is based on an installation wizard which guides you through the process.

- ❑ To install SDL Trados Studio 2011 SP2, you must have local administrator rights on your computer.
- ❑ The installer also supports administrative and silent installation. For information about an administrative installation, see “Other Installation Options” on pages 2-13. For more information about a silent installation, see “Silent Installation” on page 2-14.

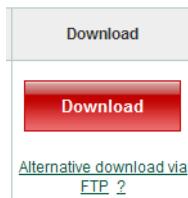
➔ NOTE

If you install SDL Trados Studio 2011 SP2 and also have SDL MultiTerm 2011 installed, you must upgrade MultiTerm to the 2011 SP2 version to be able to use both applications in tandem.

Before You Start

To install SDL Trados Studio 2011 SP2:

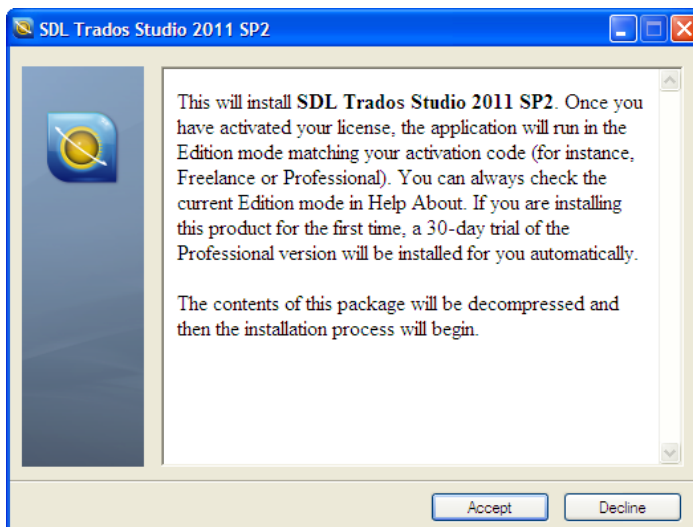
- 1 In the **My Downloads** area of the **SDL My Account** website, click the **Download** button next to SDL Trados Studio 2011 SP2 and then click **Run** to download the self-extracting installation file *SDLTradosStudio2011_nnn.exe* (n = build number).



➔ NOTE

If you encounter any problems downloading the file, click the **Alternative download via FTP** link to download the file from an FTP side instead.

When all of the installation files have been decompressed, the first page of the **SDL Trados Studio 2011 SP2** installer is displayed.



- 2 Click **Accept**. The installer files are extracted to your computer. When all of the installer files have been extracted, the **License Agreement** page is displayed.

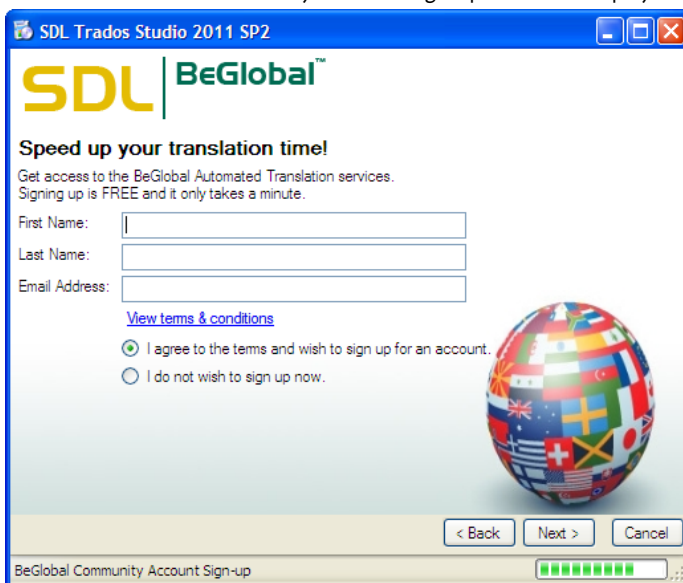
→ NOTE

If you do not have Microsoft .NET Framework 3.5 SP1 and Windows installer 3.1v2 installed, these are installed now and you may be asked to restart your computer.



- 3 Accept the license agreement and click **Next**.

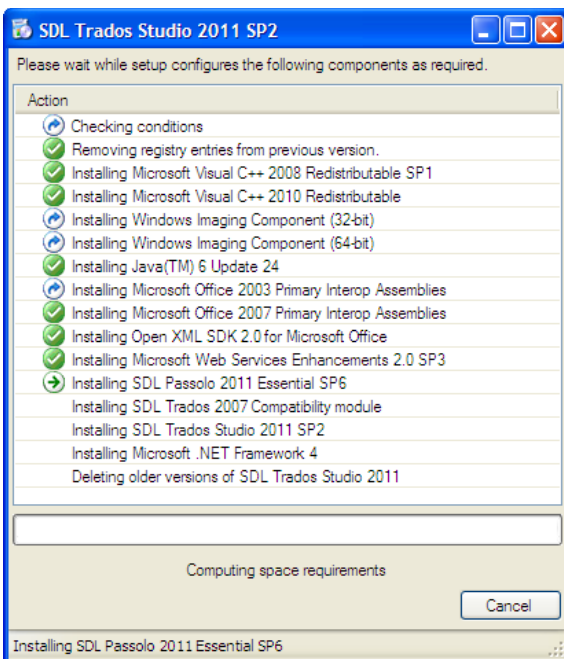
The SDL BeGlobal Community Account Sign-up screen is displayed.



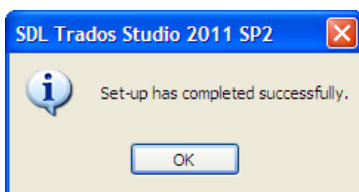
- 4 Choose if you want to create your own personalized SDL BeGlobal Community account to access free automated translation services from SDL BeGlobal. You can also sign up from within the Studio application at any time.
 - ❑ To sign up now, enter your details and click **Next**. Then to activate your account, click on the confirmation link contained in the email sent to the address you entered.
 - ❑ To skip signing up, select **I do not wish to sign up now** and then click **Next**.

A screen listing all of the components that will be installed is displayed.

- 5 The installer installs the components and indicates the progress of the installation.



- 6 When the installation is complete, a confirmation dialog box is displayed. Click **OK**.



SDL Trados Studio 2011 SP2 is now added to the **Start** menu under **Programs > SDL > SDL Trados Studio 2011**.

SDL Passolo Essential 2011 SP6 is now added to the **Start** menu under **Programs > SDL > SDL Passolo Essential 2011 SP6**.

➔ NOTE

When you start the application, a **Product Activation** dialog box is displayed. Use this to activate your product or choose to use the 30 day trial. For more information, click the **Help** button on the dialog box.

OTHER INSTALLATION OPTIONS

Administrators may wish to use these alternative methods for distributing and installing SDL Trados Studio 2011 SP2.

NOTE

If you install SDL Trados Studio 2011 SP2 and also have SDL MultiTerm 2011 installed, you must upgrade MultiTerm to the 2011 SP2 version to be able to use both applications in tandem. For more information about administrative and silent installation, see the *SDL MultiTerm 2011 SP2 Client Installation Guide*.

Administrative Installation

In an administrative installation, the system administrator copies the installer files to a location that is always available, typically a network drive. This means that the files are permanently accessible to anyone who wants to install SDL Trados Studio 2011 SP2.

To perform an administrative installation of SDL Trados Studio 2011 SP2:

- 1 Extract the installation files to a folder. You can do this by running the installer until the compressed files have all been decompressed and extracted and then stopping the installer before the installation takes place.

NOTE

The unpack location is
`%ALLUSERSPROFILE%\Package Cache\SDL\SDLTradosStudio2011SP2`

- 2 Locate the msi file. The file name is: `TranslationStudio2.msi`

The default location for this file is:

```
%ALLUSERSPROFILE%\Package  
Cache\SDL\SDLTradosStudio2011SP2\modules
```

- 3 Select **Start > Run** and enter the following command:
`Msiexec /a "%ALLUSERSPROFILE%\Package
Cache\SDL\SDLTradosStudio2011SP2\modules\TranslationStudio2.
msi" TARGETDIR="path to studio admin install location">`
- 4 Click **OK** to start the process.
- 5 Repeat this procedure to install MT Core. In the same unpack location, locate `MTCORE9.msi`.

- 6 Select **Start > Run** and enter the following command:
Msiexec /a "%ALLUSERSPROFILE%\Package
Cache\SDL\SDLTradosStudio2011SP2\modules\MTCORE9.msi"
TARGETDIR="path to MTCORE admin install location">
CLIENTINSTALL=1
- 7 Use the same procedure to install the Trados Compatibility module if you require WinAlign and the S-Tagger components. The msi for this is tradoscompatibility1.msi

→ NOTE

This procedure only copies the setup files to the specified location; it does not constitute an actual installation. Use the setup files to install in the usual way.

Logging an Installation

The installation is logged automatically. Log files are created here:

%ALLUSERSPROFILE%\Application Data\SDL\Chainer\Logs

Silent Installation

Before starting the installation, ensure that the target machines are running on Windows XP3 SP3, Windows Server 2003 SP2 or a later operating system.

Prerequisite Software Not Included in the Installer

You need to install the following prerequisites manually as they are not included as part of the install:

- 1 Download and install [Windows Installer 3.1v2](#) (already installed on all versions of Windows except Windows Server 2003 with no service packs and Windows XP prior to SP3).
- 2 Download and install [.Net Framework 3.5 sp1](#) (already installed on Windows Server 2008 Release 2 and Windows 7).

→ NOTE

For more information, see [.NET Framework 3.5 Deployment Guide for Administrators](#).

- 3 Download and install [Microsoft Visual C++ 2005 Redistributable SP1 with the MFC Update](#).
- 4 If you are also installing SDL Trados 2009, do this first.

Included Prerequisites

The following prerequisites are contained within the distributed package and must be manually installed as they are not included in the MSI for Studio.

- 1 Extract the installation files to a folder. You can do this by running the installer until the compressed files have all been decompressed and extracted and then stopping the installer before the installation takes place.



NOTE

The unpack location is

```
%ALLUSERSPROFILE%\Package  
Cache\SDL\SDLTradosStudio2011SP2\Modules
```

- 2 Install Microsoft Visual C++ 2008 Redistributable SP1 with the MFC Update:

- ▣ Locate the exe file: `2008_SP1_vc redistrib_x86.exe` in the default unpack location.
- ▣ Select **Start > Run** and enter the following command:
`"<Path to dir>\2008_SP1_vc redistrib_x86.exe" /qb`



NOTE

This command returns a standard MSI return code. The first form of the command does not work when used with `CreateProcess()` but does work with `ShellExecute()`. Therefore, if the first command does not work, execute the following command from a command shell:

```
"%COMSPEC%" /c "<Path to dir>\2008_SP1_vc redistrib_x86.exe" /qb
```

- 3 Install Microsoft Visual C++ 2010 Redistributable SP1 with the MFC Update:

- ▣ Locate the exe file: `2010_vc redistrib_x86.exe` in the default unpack location.
- ▣ Select **Start > Run** and enter the following command:
`"%COMSPEC%" /c <Path to dir>\2010_vc redistrib_x86.exe" /passive /norestart`



NOTE

This command returns a standard MSI return code. Microsoft changed the update strategy for C++ runtimes from side by side installations to upgradable installations. That means this command will fail if a version of 10.0.30319 or higher is already installed.

4 Install Java 6 Update 24:

- ❑ Locate the following files: `jre1.6.0_24.msi` and `Data1.cab` in the default unpack location.
- ❑ Select **Start > Run** and enter the following command:
`msiexec /i "<Path to dir>\jre1.6.0_24.msi" /qn /l*v "<path to log file>" STATIC=1 SKIPLICENSE=1 ENDDIALOG=0 REBOOT=Suppress`

5 Install Microsoft Office. This must be installed prior to the Primary Interop Assemblies (PIA).**→ NOTE**

- ❑ SDL Trados Studio 2011 SP2 fully supports all Microsoft Office 2007 and 2010 file formats. An installation is required to use the preview features and Microsoft Word spell-checking. Microsoft Word 2003 or later is required for processing RTF-based files and PDF files.
- ❑ The default installation of Microsoft Office 2010 includes its own PIAs. If you do not use the default installation, ensure that the PIAs are selected for installation during feature selection.

6 If you have Microsoft Office 2003 installed, then install Microsoft Office 2003 Primary Interop Assemblies:

- ❑ Locate the msi file: `O2003PIA.msi` in the default unpack location.
- ❑ Select **Start > Run** and enter the following command:
`msiexec /i "<Path to dir>\O2003PIA.msi" /qn /l*v "<path to log file>"`

7 If you have Microsoft Office 2007 installed, then install Microsoft Office 2007 Primary Interop Assemblies:

- ❑ Locate the msi file: `O2007PIA.msi` in the default unpack location.
- ❑ Select **Start > Run** and enter the following command:
`msiexec /i "<Path to dir>\O2007PIA.msi" /qn /l*v "<path to log file>"`

8 Install Open XML SDK 2.0 For Microsoft Office:

- ❑ Locate the msi file: `OpenXMLSDKv2.msi` in the default unpack location.
- ❑ Select **Start > Run** and enter the following command:
`msiexec /i "<Path to dir>\OpenXMLSDKv2.msi " /qn /l*v "<path to log file>"`

9 Install Microsoft Web Services Enhancements 2.0 SP3:

- ❑ Locate the msi file: `Microsoft WSE 2.0 SP3 runtime.msi` in the default unpack location.
- ❑ Select **Start > Run** and enter the following command:
`msiexec /i "<Path to dir>\Microsoft WSE 2.0 SP3 runtime.msi"
/qn /l*v "<path to log file>"`

10 Install this version of the Windows Imaging Component if you have a 32-bit Windows 2003 server:

- ❑ Locate the exe file: `wic_x86_enu.exe` in the default unpack location.
- ❑ Select **Start > Run** and enter the following command:
`"%COMSPEC%" /c <Path to dir>\wic_x86_enu.exe" /quiet /norestart`

This returns a standard MSI return code.

11 Install this version of the Windows Imaging Component if you have a 64-bit Windows 2003 server:

- ❑ Locate the exe file: `wic_x64_enu.exe` in the default unpack location.
- ❑ Select **Start > Run** and enter the following command:
`"%COMSPEC%" /c <Path to dir>\wic_x64_enu.exe" /quiet /norestart`

(This returns a standard MSI return code)

12 Install .Net Framework 4: (this version of .Net Framework is required for Passolo only. If you are not installing Passolo, you can omit it. Installation may require you to restart your computer.)

- ❑ Locate the exe file: `dotNetFx40_Full_x86_x64.exe` in the default unpack location.
- ❑ Select **Start > Run** and enter the following command:
`"%COMSPEC%" /c <Path to dir>\dotNetFx40_Full_x86_x64.exe"
/passive /promptrestart`

Product Installation

To perform a silent installation of SDL Trados Studio 2011 SP2:

- 1 If you have not done so already, extract the installation files to a folder. You can do this by running the installer until the compressed files have all been decompressed and extracted and then stopping the installer before the installation takes place.

NOTE

The unpack location is

```
%ALLUSERSPROFILE%\Package Cache\SDL\SDLTradosStudio2011SP2
```

- 2 Locate the msi file. The file name is: TranslationStudio2.msi

The default location for this file is:

```
%ALLUSERSPROFILE%\Package  
Cache\SDL\SDLTradosStudio2011SP2\modules
```

- 3 Select **Start > Run** and enter the following command:

```
msiexec.exe /i "<Path to 'TranslationStudio2.msi'>" /qn /l*v  
"<Path to log file>"
```

It is important to generate the log as the log will be used to determine the success or failure of the installation.

- 4 If you want to use the WinAlign and STagger components and do not have Trados 2007 installed, install the Trados 2007 compatibility module. Locate the msi file: TradosCompatibility1.msi in the same default location.

- 5 Select **Start > Run** and enter the following command:

```
msiexec.exe /i "<Path to the compatibility msi>" /qn /l*v  
"<Path to log file>"
```

- 6 Repeat this procedure to install Passolo Essential 2011 SP6. Locate the msi file: PassoloEssential2011_SP6.1.msi in the same default location.

- 7 Select **Start > Run** and enter the following command:

```
msiexec.exe /i "<Path to 'PassoloEssential2011_SP6.1.msi'>"  
/qn /l*v "<Path to log file>"
```

Silent Removal

First deactivate the license, where necessary. Some licenses such as network licensing using a licensing server will not require this.



NOTE

Normally, SDL Trados Studio should be uninstalled using the **SDL Trados Studio 2011 SP2 - Remove suite of products** entry in Add/Remove Programs. This entry will not appear unless Studio was deployed using the full installer. Therefore, if the software was installed using silent installation, to uninstall you must remove the different installed product packages individually.

To silently remove an MSI, use the following command:

```
msiexec /x "<path to msi file>"
```

Optionally you can log the removal with /l*v "<path to log file>

The following packages should be removed:

- SDL Passolo Essential 2011 SP6
- SDL Trados 2007 Compatibility Module
- SDL Trados Studio 2011 SP2

Prerequisites are third-party products and should not generally be removed as it may be that other applications on the machine are using them. Only remove them if you are certain that they are not required.

SOFTWARE UPDATES

Some software updates to the application can be downloaded from within SDL Trados Studio or software updates can be automatically checked for and downloaded when SDL Trados Studio is started. An individual user can specify how they want SDL Trados Studio to detect application updates or a system administrator can specify a group policy for all users.

Temporary Directory

Software updates are downloaded to the following temporary directory:

%temp directory%\studio2updates

After the update is installed, you can delete the files from this location.

Individual User Software Updates

An individual user of SDL Trados Studio can do the following:

- ❑ Specify that they want to check for software updates when SDL Trados Studio starts. They can do this on the **Automatic Updates** page of the **Options** dialog box.
- ❑ Manually check for updates by selecting **Help > Check for Updates** from the menu bar in SDL Trados Studio.



NOTE

If either of these options is unavailable, the system administrator has set a group policy that enables or disables checking for software updates.

Group Policy Software Updates

The SDL Trados Studio application includes a feature that notifies users of the availability of software updates and gives them the option to install the updates on their own computer. The system administrator can set a group policy that controls the way this feature works. You can choose to:

- Enable automatic checking for updates. When you choose this option, an automatic check for updates is made every time a user starts the application. When an update is available, the user is prompted to apply the update to their installation.
- Enable user control of checking for updates. When you choose this option, the users can enable automatic checks for updates (these take place whenever the application is started) and they can also check for updates manually at any time. When an update is available, the user is prompted to apply the update to their installation.
- Disable all checks. This option means that automatic checks for updates will not be performed and users cannot perform manual checks either. You should choose this option if you want to control the application of updates centrally.

You define a group policy by configuring the `Studio2AutoUpdate.adm` file in the **Group Policy** dialog box.

To define a group policy (note that the screenshots here may vary slightly, depending on the operating system that you are using):

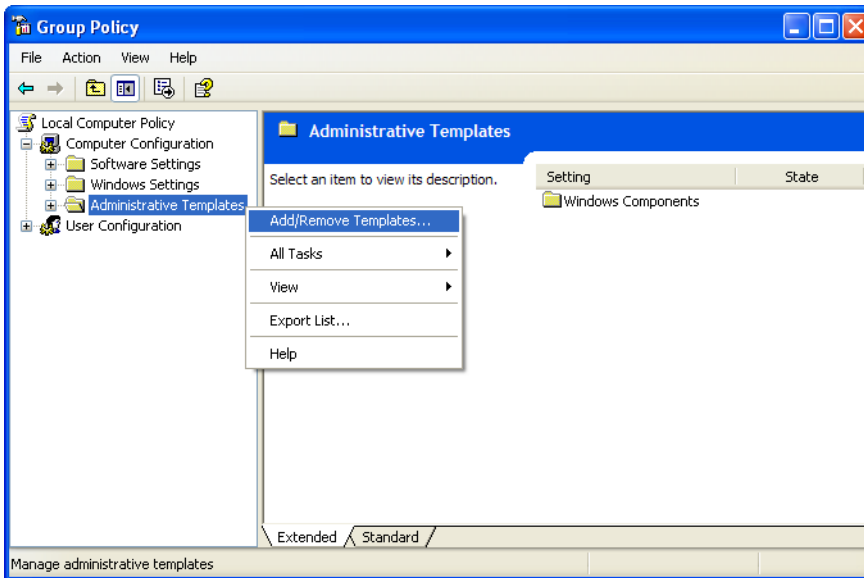
- 1 Locate the ADM file. The file name is: `Studio2AutoUpdate.adm`

The default location for this file is:

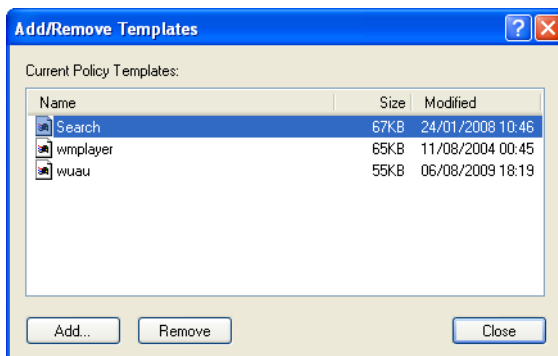
```
%ALLUSERSPROFILE%\Package Cache\SDL\SDLTradosStudio2011SP2
```

- 2 Select **Start > Run** and enter the following command:
`gpedit.msc`

- The **Group Policy** dialog box is displayed. Right-click on **Computer Configuration > Administrative Templates** and select **Add/Remove Templates** from the shortcut menu.

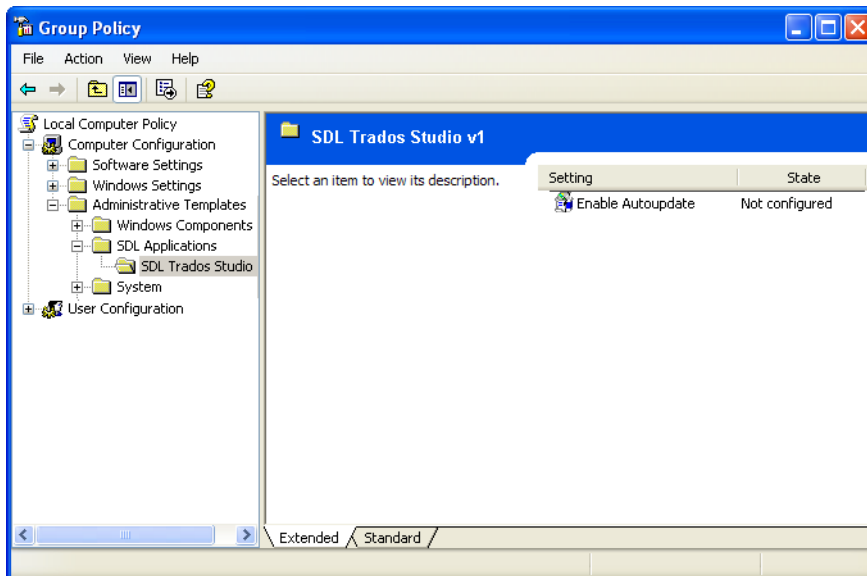


- The **Add/Remove Templates** dialog box is displayed. Click **Add** and browse to the location of the `Studio2AutoUpdate.adm` file.



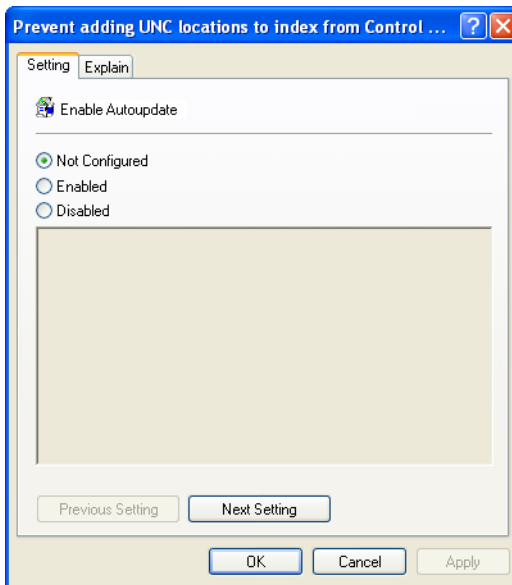
- Click **Close** when the template is added.

- 6 **Computer Configuration > Administrative Templates > SDL Applications > SDL Trados Studio v2** is added to the navigation tree. Select **SDL Trados Studio** to display its settings on the right.



- 7 Double-click on the **Enable Autoupdate** setting.

- 8 The **Prevent adding UNC locations to index from Control** dialog box is displayed. Select one of the following options and click **OK** to save the group policy:
- Not Configured** - The user can choose to enable or disable checking for application updates automatically when the application starts and can also manually check for application updates.
 - Enabled** - SDL Trados Studio checks for updates automatically when the application starts. The user cannot disable the automatic updates option. The user can also manually check for application updates.
 - Disabled** - Automatic checks for application updates and manual checks for updates are disabled. The user cannot enable either of these options.



Logging a Software Update

The update is logged automatically. There are two log files that are created. The first log file is created when checking for updates and downloading installer for the update. This log file is located here:

C:\Documents and Settings\All Users\Application Data\SDL\Studio2\Updates

The other log file is created during the installation of the update and is located here:

%temp directory%\studio2updates

Removing your Software Update

If you encounter any problems after updating your software, you can remove the update.

To remove your software update:

- 1 From the **Start** menu on your computer, choose **Settings > Control Panel**.
- 2 In the **Control Panel**, select **Add or Remove Programs** or **Programs and Features**.
- 3 Ensure that the **Show updates** option is selected.
- 4 Select the software update from the list of programs and click **Remove**.
- 5 Follow the on-screen instructions to remove the software update.



NOTE

In addition to removing the update, clear the **Automatically check for updates when the application starts** check box on the **Automatic Updates** page of the **Options** dialog box. This disables the option and prevents the installation of the update again.

MAINTAINING YOUR INSTALLATION

You can repair or remove your SDL Trados Studio 2011 SP2 installation and SDL Passolo Essential 2011 SP6 installation at any time.

Repairing your SDL Trados Studio 2011 SP2 Installation

Use the repair feature to repair or restore missing files or registry entries in your installation.

To repair your installation:

- 1 From the **Start** menu on your computer, choose **Settings > Control Panel**.
- 2 In the **Control Panel**, select **Add or Remove Programs** or **Programs and Features**.
- 3 Select **SDL Trados Studio 2011 SP2** from the list of programs and click **Click here for support information**. The **Support Info** dialog box is displayed.
- 4 Click the **Repair** button. This starts the Windows Installer which runs the repair process.
- 5 When the process is complete, click **Finish**.
- 6 Repeat for **MT Core** and **Trados Studio Compatibility** if applicable.

Repairing your SDL Passolo Essential 2011 SP6 Installation

Use the repair feature to repair or restore missing files or registry entries in your installation.

To repair your installation:

- 1 From the **Start** menu on your computer, choose **Settings > Control Panel**.
- 2 In the **Control Panel**, select **Add or Remove Programs** or **Programs and Features**.
- 3 Select **SDL Passolo Essential 2011 SP6** from the list of programs and click **Change/Remove**.
- 4 The **Select Uninstall Method** page of the **SDL Passolo** wizard is displayed.
- 5 Select **Repair** and click **Next**.
- 6 Follow the on-screen instructions for removing SDL Passolo Essential 2011 Sp6.

Removing SDL Trados Studio 2011 SP2

Before uninstalling, we recommend that you deactivate your product license. To do this, call up **Help > Product Activation** in the application.

To uninstall:

- 1 From the **Start** menu on your computer, choose **Settings > Control Panel**.
- 2 In the **Control Panel**, select **Add or Remove Programs** or **Programs and Features**.
- 3 Select:
 - SDL Trados Studio 2011 SP2 - Remove suite of products** from the list of programs to remove SDL Trados Studio 2011 SP2 and all of the components installed with the application. See *About the SDL Trados Studio 2011 SP2 Installer on page 3-4* for a list of the components installed with SDL Trados Studio 2011 SP2.
 - SDL Trados Studio 2011 SP2** from the list of programs to remove only the SDL Trados Studio 2011 SP2 application.
- 4 Choose **Remove** or **Uninstall** as appropriate.

Removing Passolo Essential 2011 SP6

You can choose to remove Passolo Essential 2011 SP6 without removing SDL Trados Studio 2011 SP2. Before uninstalling, we recommend that you deactivate your product license. To do this, call up **Help > Product Activation** in the application.

To uninstall:

- 1 From the **Start** menu on your computer, choose **Settings > Control Panel**.
- 2 In the **Control Panel**, select **Add or Remove Programs** or **Programs and Features**.
- 3 Select **SDL Passolo Essential 2011 SP6** from the list of programs.
- 4 Choose **Remove** or **Uninstall** as appropriate.

Technical Support

For more information on technical support, consult the online support center at <http://support.sdl.com>.

There is also support information and a link to the support website on the **Support Info** dialog box. To display this dialog box:

- 1 From the **Start** menu on your computer, choose **Settings > Control Panel**.
- 2 In the **Control Panel**, select **Add or Remove Programs** or **Programs and Features**.
- 3 Select **SDL Trados Studio 2011 SP2 - Remove suite of products** or **SDL Passolo Essential 2011 SP6** from the list of programs and click **Click here for support information**. The **Support Info** dialog box is displayed.

WHAT'S NEXT?

The instructions in the **SDL Trados Studio Video Help Series** and the **Quick Start Guides** will quickly get you started with SDL Trados Studio. You can access the guides and videos directly from the [SDL Trados Studio Help](#).

If you have some existing translation resources, translation memories for example, you should migrate them to the SDL Trados Studio 2011 SP2 format. Converting or upgrading existing translation resources so that you can work with them in SDL Trados Studio 2011 SP2 is described in the *SDL Trados Studio 2011 SP2 Migration Guide*.

SDL is the leader in Global Information Management. Global Information Management enables companies to engage with their customers throughout the customer journey – from brand awareness, to sales and after-sales support – and across languages, cultures and channels.

SDL's best-of-breed Web Content Management, eCommerce, Structured Content and Language Technologies, combined with its Language Services drive down the cost of content creation, management, translation and publishing. SDL solutions increase conversion ratios and customer satisfaction through targeted information across all customer touch points.

Global industry leaders who rely on SDL include ABN-Amro, Bosch, Canon, CNH, FICO, GlaxoSmithKline, Hewlett-Packard, KLM, Microsoft, NetApp, Philips, SAP and Sony. SDL has over 1,500 enterprise customers, has deployed over 170,000 software licenses and provides access to on-demand portals for 10 million customers per month.

It has a global infrastructure of more than 60 offices in 35 countries.

For more information, visit

www.sdl.com.

